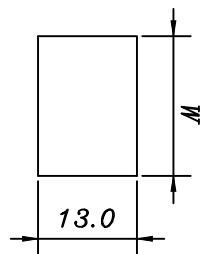


MODEL NO	SCHEMATIC
RL3-4 A	
RL3-4 B	
RL3-4 C	

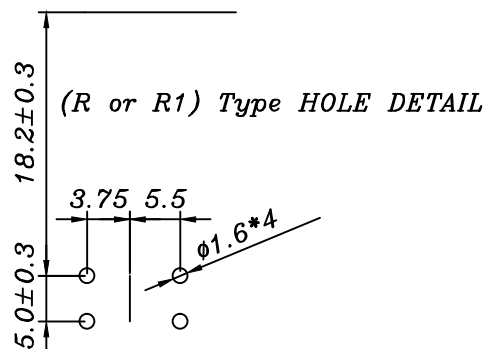


W	PANEL THICK
19.2	0.75~1.25
19.4	1.25~2.0
19.8	2.0~3.0

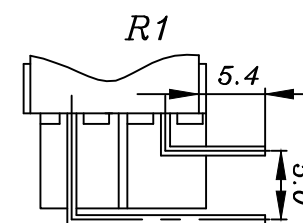
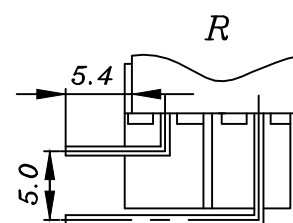
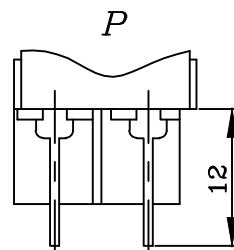
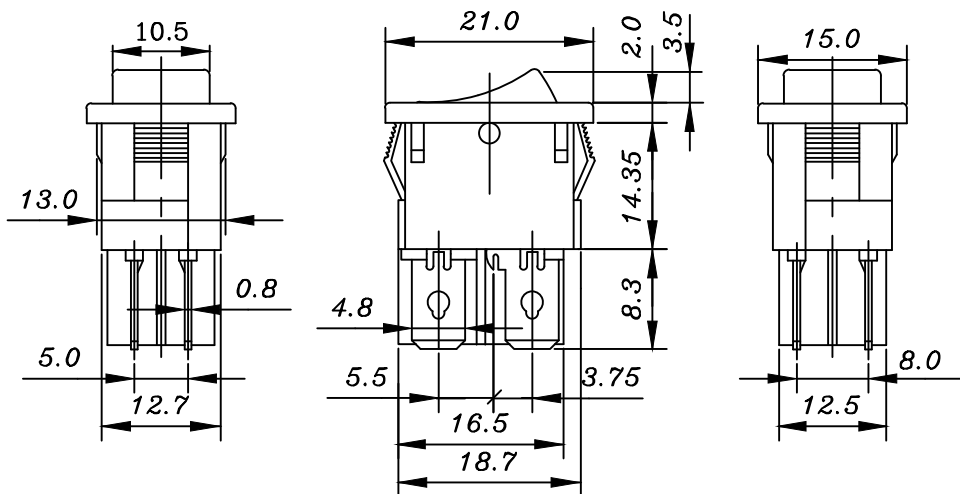
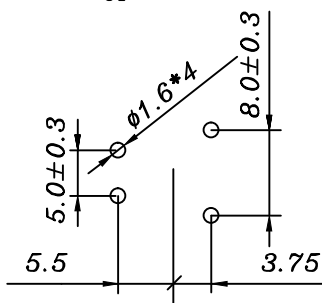
1. MAX INRUSH CURRENT : 80A.
2. AMBIENT TEMP. : 0°C~85°C.

3. RATING : 10A 125VAC/6A 250VAC uT85. 14(S)
 T: 16A 125VAC/10A 250VAC
 1/3HP 125~250VAC T105

4. CONTACT RESISTANCE : 20mΩ Max.
5. INSULATION RESISTANCE : DC 500V 500MΩ Min.
6. WITHSTAND VOLTAGE : AC 2000V 1 Minute.
7. OPERATION FORCE : 900±300 GRAM.
8. OPERATION LIFE : 10,000 CYCLES AT FULL LOAD.
9. Soldering : 280° for 3 Sec



P Type HOLE DETAIL



5	CONTACT	4	Ag		
4	LEVER	2	BeCu		
3	TERMINAL	4	Bsp1-1/2H	t=0.8	Sn-plated
2	ROCKER	1	Nylon#66 or PC		
1	HOUSING	1	Nylon#66	94V2	

編號	零件名稱	數量	材質	規格	加工處理	備註
設計	L,Chun-Ting	850630	品名	RL3-4系列承認圖	無註記公差	第三
製圖	L,Chun-Ting	850630	品號	RL3-4	長度±0.20 角度±	角法
描圖	L,Chun-Ting	890816	圖號	E21-00A	比例	單位 MM
校對						
核准						
採購規範						

年	月	日	更正者	更正	記	事	△