

Fuse holder for overload protection

Screw-in mounting

Rating:15A 250VAC (UL,CUL)

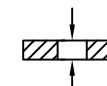


Fuse:Ø6.0x30mm



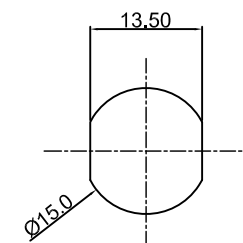
Cap:Screw type

Panel thickness:4.5mm max



Operating Temperature:-10°C~+70°C

CUT-OUT



MATERIAL:

Housing:PBT,UL rated 94V0

Bayonet:PBT,UL rated 94V0

Terminal:Brass,silver plated

Nut:Zn Alloy,Ni plated

				公差 TOLERANCES		.X±0.3 .XX±0.15		角度 ANGLE ±1°		单位 DIMENSION UNIT mm.	
				视角	比例尺	日期	品名 TITLE		图号		
				VIEWING ANGLE	SCALE	DATE	DRAWING NO				
A1	开孔尺寸变更	2012.02.18	N/A	核准	Richard	核对	Sinc	绘图	Sinc	FH15-22A	
A0	New Issue	2011.05.11	N/A	APPROVED BY	Richard	CHECKED BY	Sinc	DRAWN BY	Sinc	FH15-22A	
版本 VER	变更说明 CHANGE DESCRIPTION	日期 DATE	ECN NO								